

RECEIVED: 09/07/2025



**Appendix 14-5**  
**Photowire Visualisation**  
**Booklet**

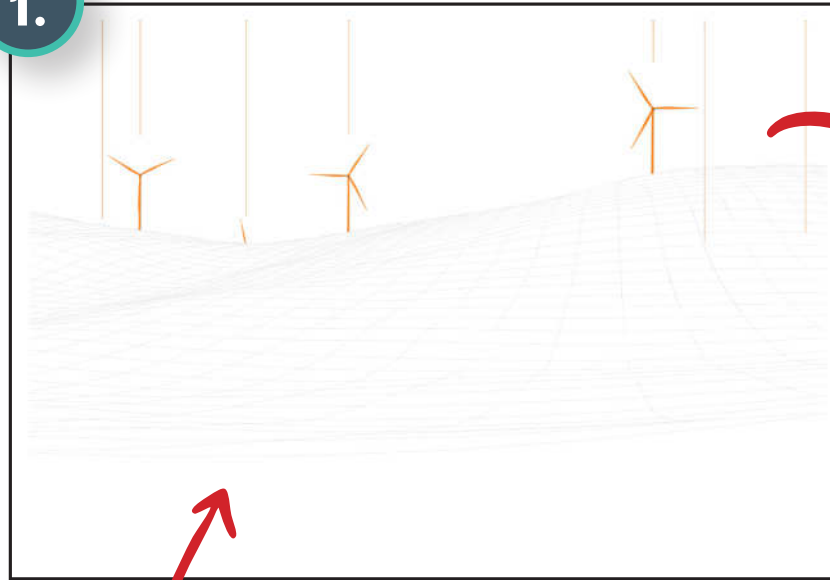
**Proposed Seskin**  
**Renewables**  
**Wind Farm**

RECEIVED: 09/07/2025

# PRODUCTION

Photowires are a combination of photographic images and a 'wireline'.

## 1. Wireline



A wireline is the model of the proposed turbines accurately scaled and positioned within a digital elevation (topography) as seen from a viewpoint.

## 2. Photographic image



Photowires are produced by positioning and overlaying the wireline on top of the stitched photographic imagery captured from a viewpoint location.

## 3. Photowire





## Photowire

Methodology – What are Photowires and how are they produced?

Photowires are early-stage photomontage visualisations (classified as ‘Type 3 Visualisations’ in the LI TGN 06/19, 2019).

Photowires are a combination of panoramic photographic images and a ‘wireline’. A wireline is the model of the proposed turbines accurately scaled and positioned within a digital elevation model (topographic model) as seen from a viewpoint. Photowires are produced by positioning and overlaying the wireline on top of the stitched photographic imagery captured from a viewpoint location.

Characteristics of Photowires - Early-stage and Draft Visualisations

The photowire imagery in this Appendix are draft, therefore:

- No rendering is applied to the imagery to make the turbines photorealistic – hence the orange colour;
- These photowires only include the cumulative turbines of the Lisdowney Wind Farm – all other cumulative wind farms have been excluded from these photowires;
- The wireline element of the Photowire only accounts for screening from topography in the elevation model;
- The wireline overlaid the photograph is shown on top of the panoramic photograph, in front of above ground elements of the landscape e.g. vegetation screening and the built environment. Therefore, the photowire shows where the proposed turbines are located relative to the viewpoint but are seen in front of above ground features which would visually screen them from view, in reality on the ground.

### Utility of Photowires for LVIA

The 8 No. photowires are presented within this Appendix are useful visual aids for the discussion of visual effects included in the Landscape and Visual Impact Assessment (LVIA) chapter. The location of photowire viewpoints in this Appendix are marked as orange icons in mapping figures throughout the LVIA chapter and Appendices, labelled as ‘PWVP’ (e.g., PWVP-A to PWVP-H).

### Presentation of Photowires in this Appendix

The photowires in this appendix are presented on A3 paper. In accordance with the Landscape Institute Technical Guidance Note 06/19 (LI, 2019), the photowires are presented within a horizontal field of view comprising 90 degrees and vertical field of view comprising 27 degrees and are scaled according to the guidance set out in table 5 of the LI TGN 06/19, (LI, 2019)

### Viewpoints Captured in 2023 and 2024

A total of 8 No. supplementary viewpoint images have been captured for this Landscape and Visual Impact Assessment chapter in November 2023 and September 2024. These are presented as photowires PWVP-A to PWVP-H in this Photowire Visualisation Booklet and are not assessed in the EIAR. These photowires represent views of the Proposed Development from areas to the south-west, west and north-west of the Site, primarily beyond 5km to aid in visualisation of the Proposed Development from the wider landscape perspective. The photowires in this booklet are utilised to aid the discussions of Visual Effects in Section 14-7 Likely ‘Significant’ Landscape and Visual Effects of the LVIA chapter.





Photowire No.	Grid Reference (ITM)		Townland	Viewpoint Description
PWVP-A	634109	667933	Ballykieran	Viewpoint representative of Co. Kilkenny Protected View 14.
PWVP-B	637033	675643	Newtown	Viewpoint representative of Co. Laois Scenic View 14.
PWVP-C	635137	674030	Parknahown	Viewpoint representative of Co. Laois Scenic View 21.
PWVP-D	639404	665168	Tobar na Péiste	Viewpoint representative of Freshford.
PWVP-E	631784	678543	Middlemount	Viewpoint representative of residents in Ballacolla.
PWVP-F	635801	671934	Cullahill Mountain East	Viewpoint from the east of Cullahill Mountain.
PWVP-G	635626	671745	Cullahill Mountain West	Viewpoint from the west of Cullahill Mountain.
PWVP-H	640201	676768	Durrow Townparks Seandoire	Viewpoint representative of the Seandoire Residential Estate, Durrow Townparks Co. Laois.

RECEIVED: 09/07/2025

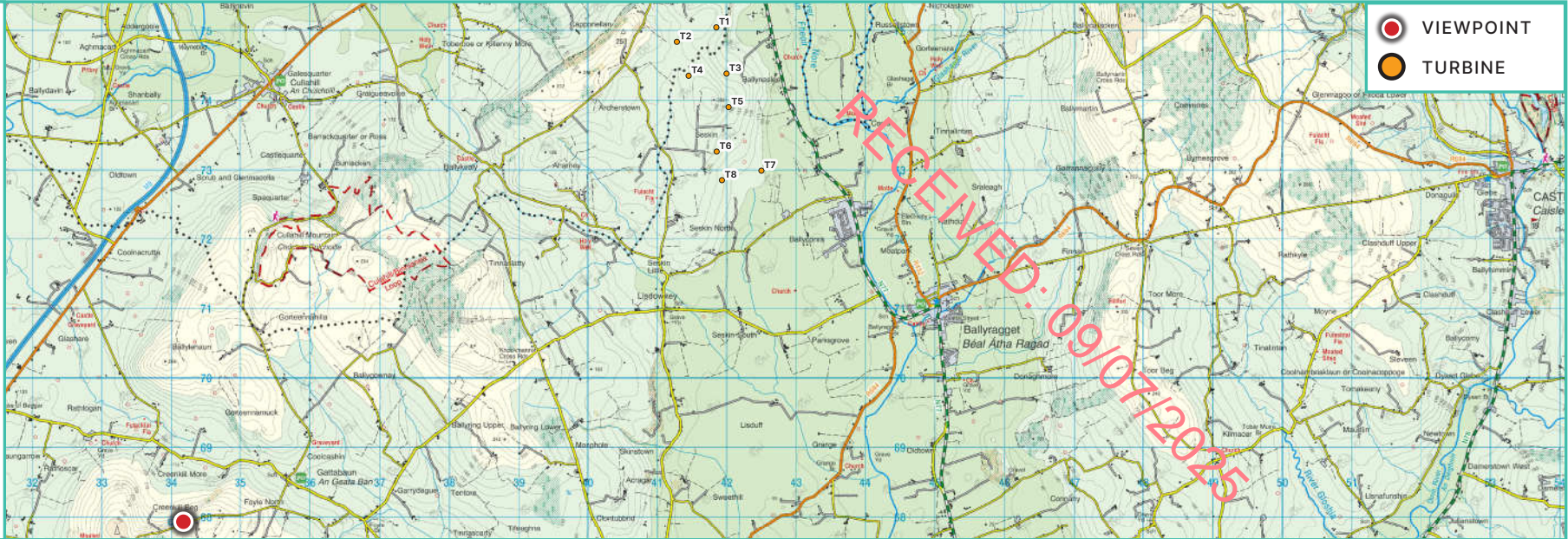


# PWVP-A

E 634109      N 667933

**Townland**  
Ballykieran

**Viewpoint Description**  
Viewpoint representative of Co. Kilkenny Protected View 14.



Existing View at 120°



Photowire at 90°

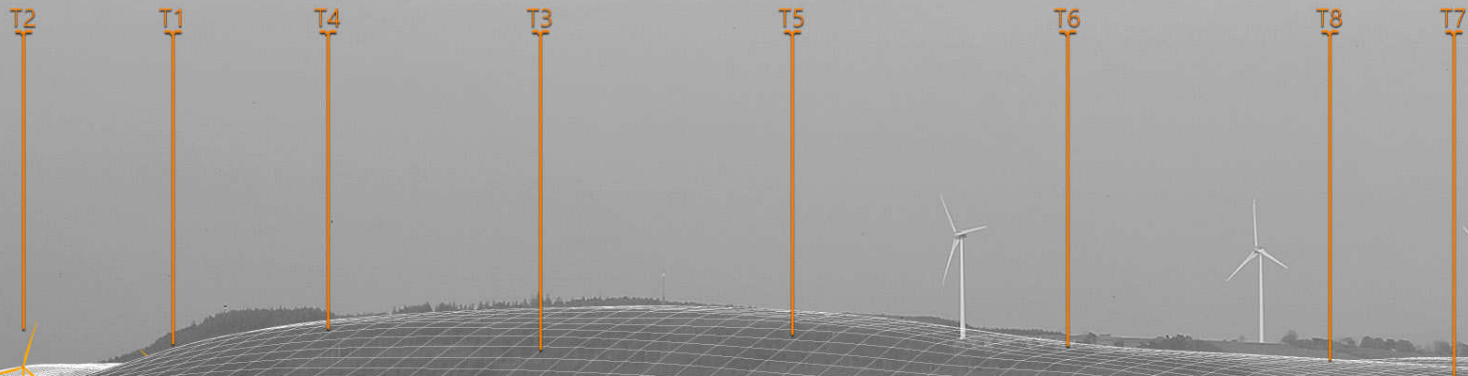


DRAFT PHOTOWIRE VISUALISATION



RECEIVED: 09/07/2025

Proposed Seskin Renewables Wind Farm



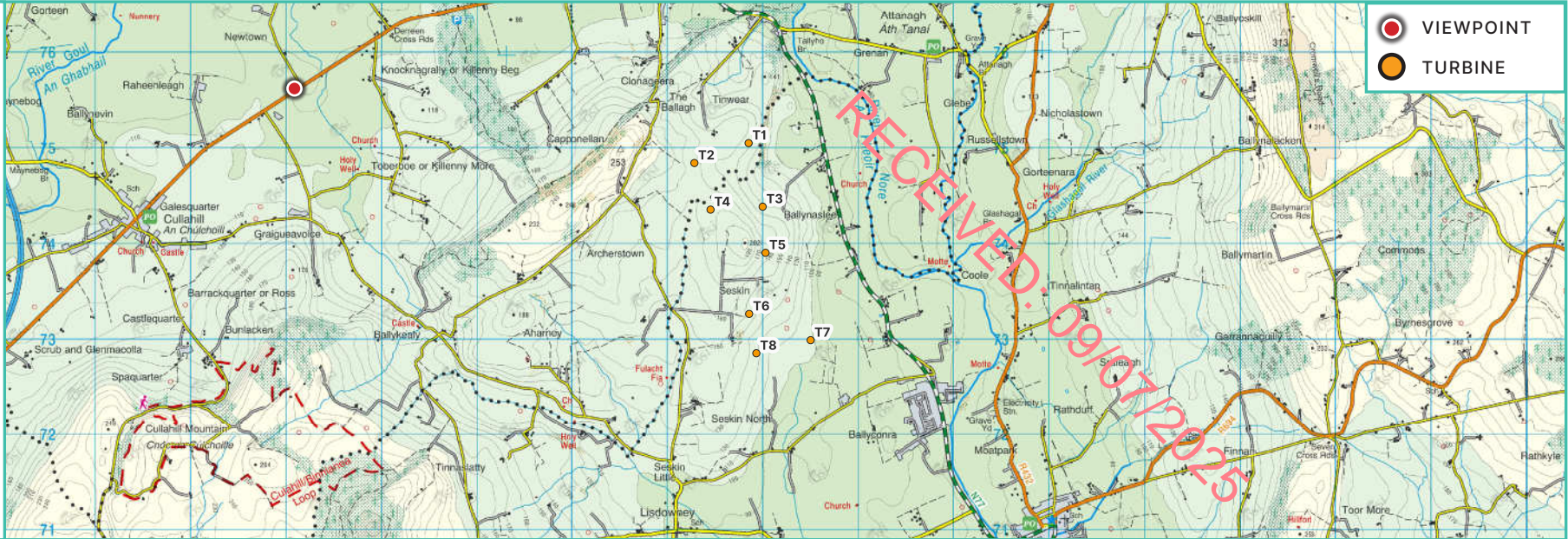


# PWVP-B

E 637033      N 675643

**Townland**  
Newtown

**Viewpoint Description**  
Viewpoint representative of Co. Laois Scenic View 14.



Existing View at 120°



Photowire at 90°



DRAFT PHOTOWIRE VISUALISATION





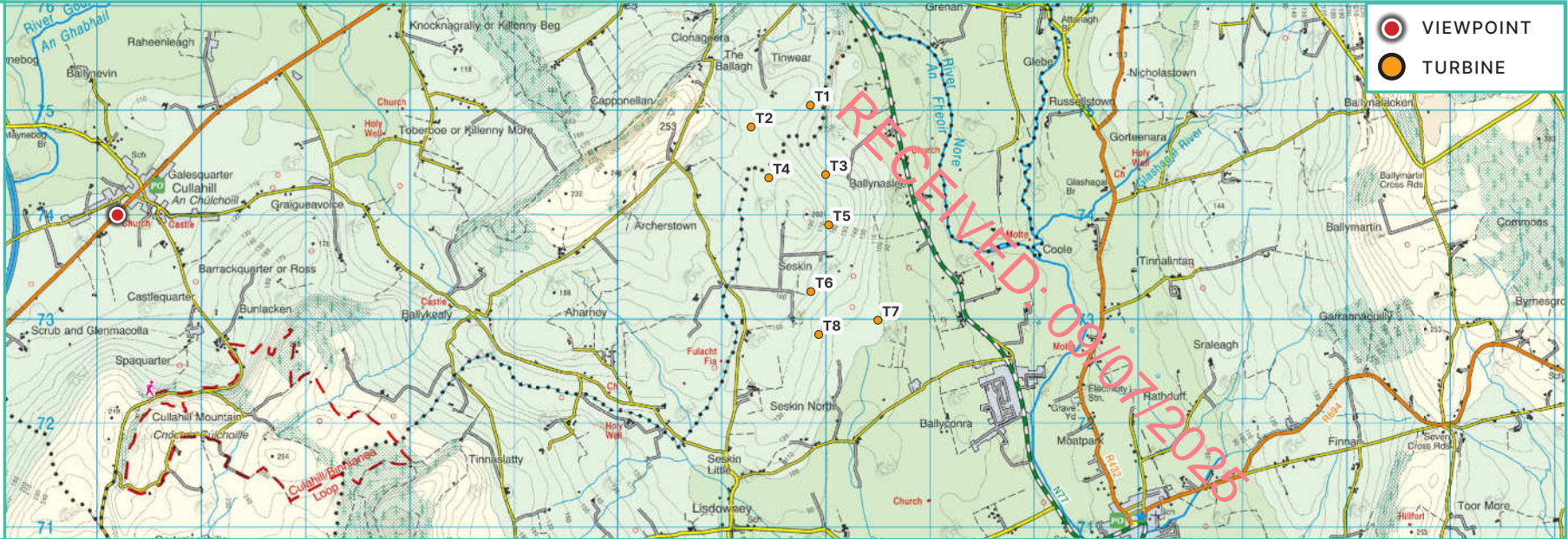


# PWVP-C

E 635137      N 674030

**Townland**  
Parknahown

**Viewpoint Description**  
Viewpoint representative of Co. Laois Scenic View 21.



Existing View at 120°



Photowire at 90°



DRAFT PHOTOWIRE VISUALISATION



RECEIVED: 09/07/2025

Proposed Baskin Renewables Wind Farm

T1

T2

T4

T3

T5

T6

T7

T8

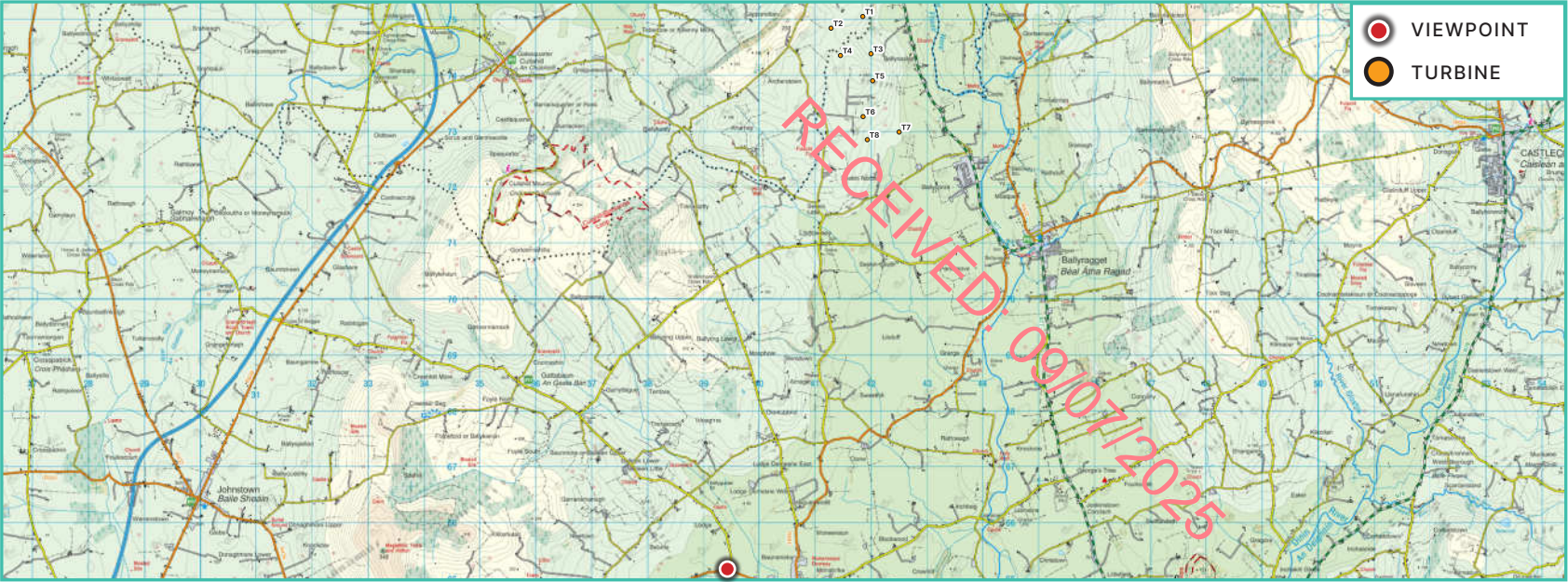


# PWVP-D

E 639404      N 665168

**Townland**  
Tobar na Péiste

**Viewpoint Description**  
Viewpoint representative of Freshford.



Existing View at 120°



Photowire at 90°



DRAFT PHOTOWIRE VISUALISATION



RECEIVED: 09/07/2025

Proposed Seskin Renewables Wind Farm

T2

T4

T1

T3

T5

T6

T8

T7

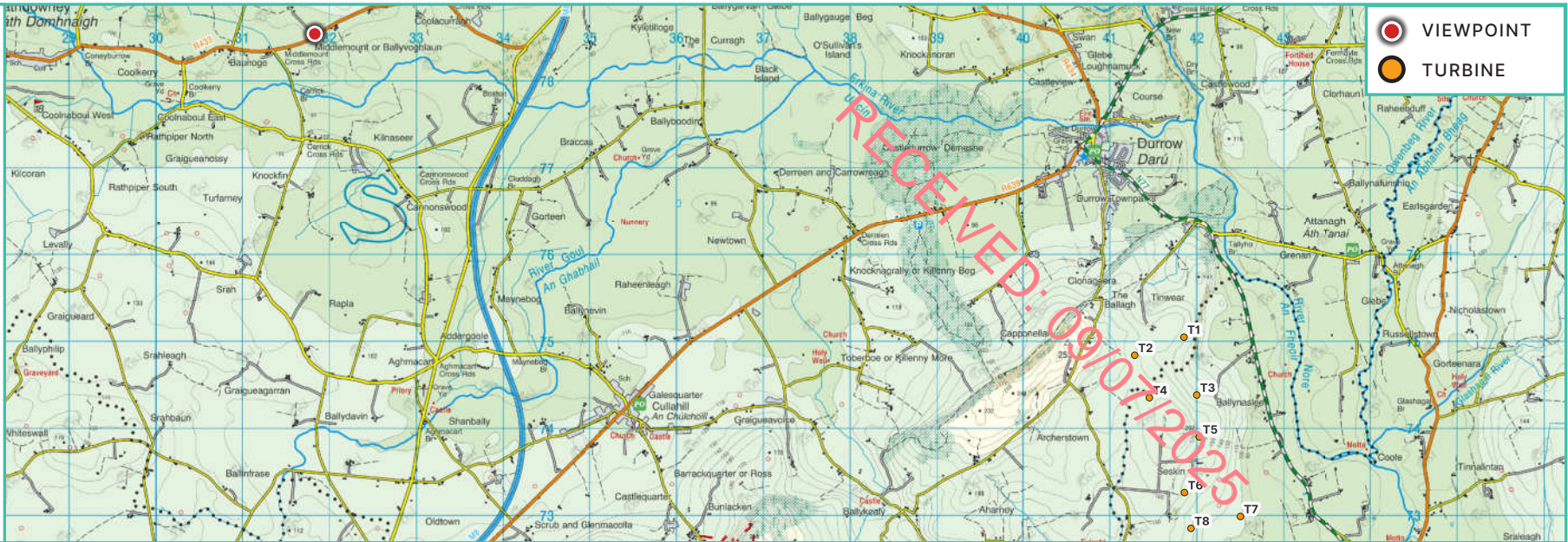


# PWVP-E

E 631784      N 678543

**Townland**  
Middlemount

**Viewpoint Description**  
Viewpoint representative of residents in Ballacolla.



Existing View at 120°



Photowire at 90°



DRAFT PHOTOWIRE VISUALISATION



RECEIVED: 09/07/2025

Proposed Seskin Renewables Wind Farm

- T1
- T2
- T3
- T4
- T5
- T7
- T6
- T8

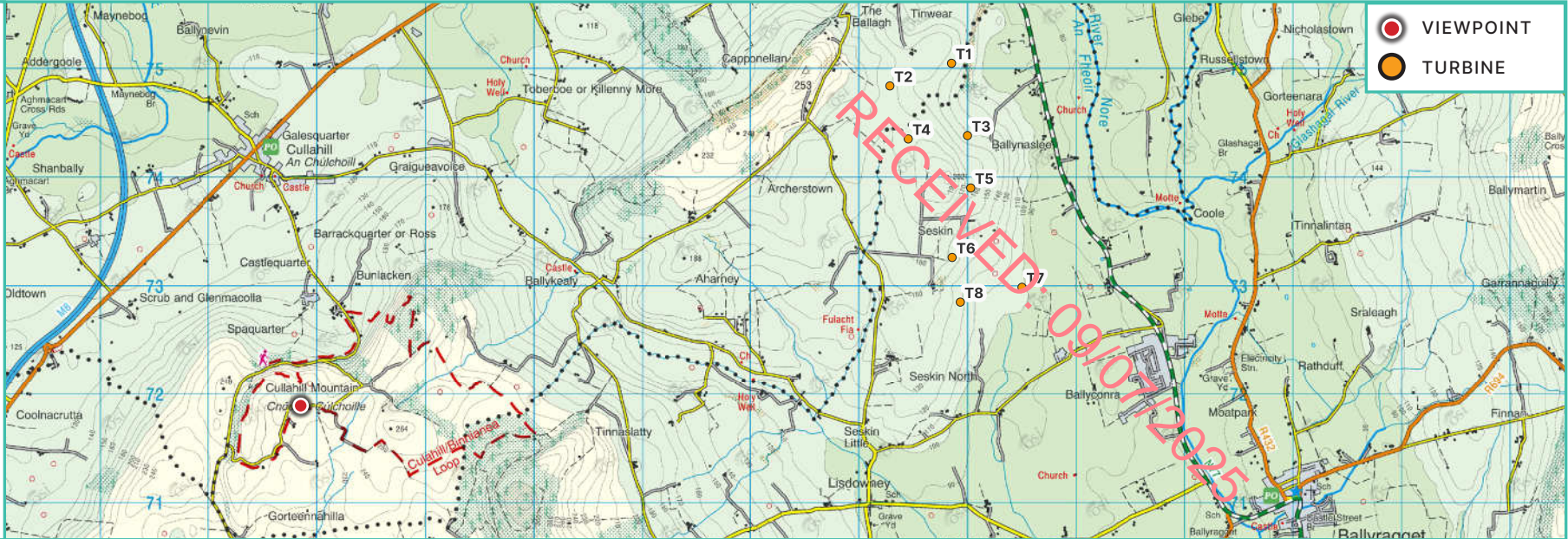


# PWVP-F

E 635801      N 671934

**Townland**  
Cullahill Mountain East

**Viewpoint Description**  
Viewpoint from the east of Cullahill Mountain.



Existing View at 120°



Photowire at 90°



DRAFT PHOTOWIRE VISUALISATION



RECEIVED: 09/07/2025

Proposed Seskin Renewables Wind Farm



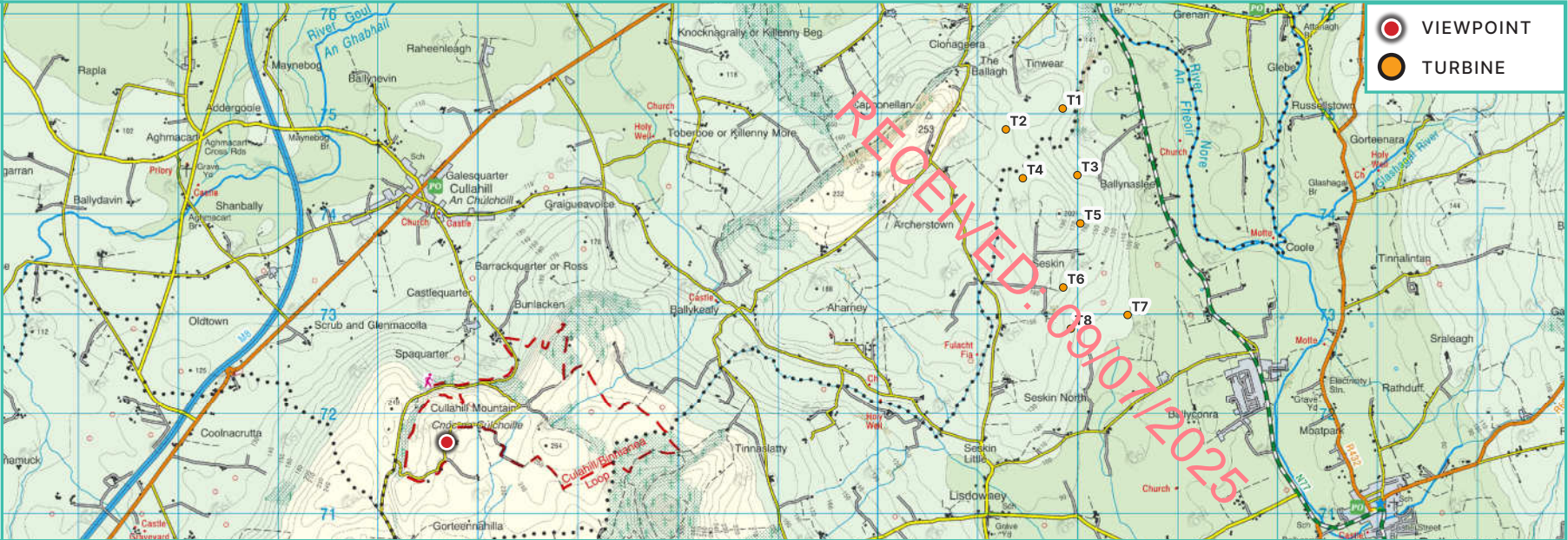


# PWVP-G

E 635626      N 671745

**Townland**  
Cullahill Mountain West

**Viewpoint Description**  
Viewpoint from the west of Cullahill Mountain.



Existing View at 120°



Photowire at 90°







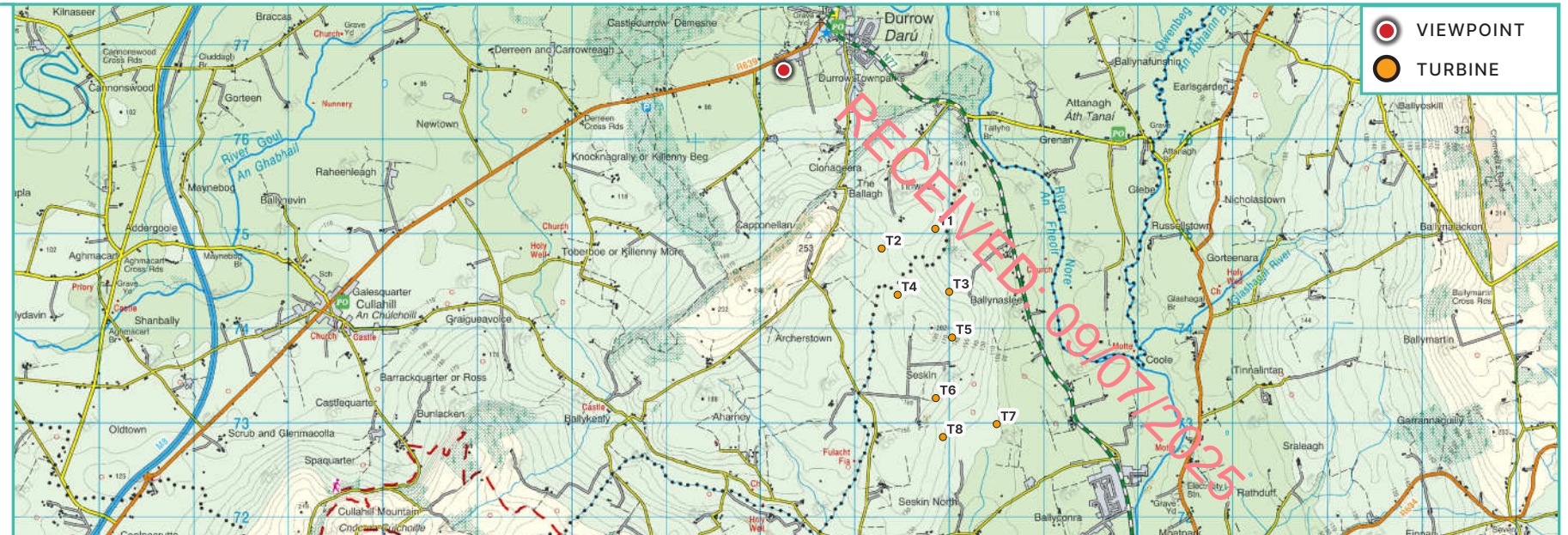


# PWVP-H

E 640201      N 676768

**Townland**  
Durrow Townparks Seandoire

**Viewpoint Description**  
Viewpoint representative of the Seandoire Residential Estate, Durrow Townparks Co. Laois.



Existing View at 120°



Photowire at 90°



DRAFT PHOTOWIRE VISUALISATION







RECEIVED: 09/07/2025

